

ECLIPSE



ECLIPSE

QUILT DESIGNED BY AGFstudio

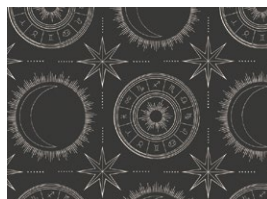


luna & laurel

FABRICS DESIGNED BY AGF STUDIO



LUL-28502
VISIONS WOODBLOCK



LUL-28506
ESOTERIC ALIGNMENT



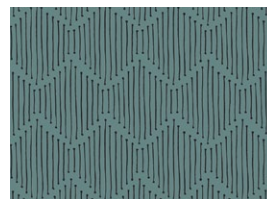
LUL-28510
STARDUST



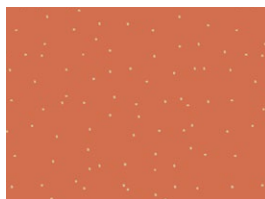
LUL-28503
PERFECTLY IMPERFECT



LUL-28505
EYE SEE YOU DAY



LUL-28507
MINDFUL PATHS



LUL-28504
SOLASTA SPECKS



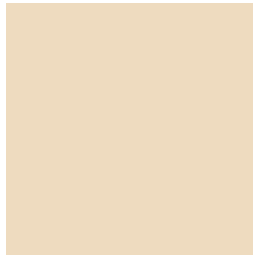
ADDITIONAL BLENDERS FOR THIS PROJECT



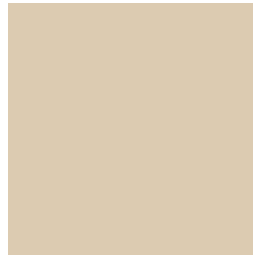
PE-452
SPRUCE



PE-508
TERRACOTTA TILE



PE-436
CREME DE LA CREME



PE-432
SANDSTONE



FINISHED SIZE | 70" x 77"

FABRIC REQUIREMENTS

| | | |
|-----------------|-----------|---------------------|
| Fabric A | LUL-28502 | $\frac{7}{8}$ yd. |
| Fabric B | LUL-28506 | $\frac{7}{8}$ yd. |
| Fabric C | LUL-28510 | 1 $\frac{3}{4}$ yd. |
| Fabric D | LUL-28503 | $\frac{5}{8}$ yd. |
| Fabric E | LUL-28505 | $\frac{1}{2}$ yd. |
| Fabric F | LUL-28507 | $\frac{7}{8}$ yd. |
| Fabric G | LUL-28504 | $\frac{5}{8}$ yd. |
| Fabric H | PE-452 | $\frac{1}{2}$ yd. |
| Fabric I | PE-508 | $\frac{1}{2}$ yd. |
| Fabric J | PE-436 | $\frac{1}{4}$ yd. |
| Fabric K | PE-432 | 1 $\frac{3}{8}$ yd. |

BACKING FABRIC

LUL-28510 5yds (*Suggested*)

BINDING FABRIC

Fabric **F** LUL-28507 (*Included*)

CUTTING DIRECTIONS

$\frac{1}{4}$ " seam allowances are included.

Cutting direction for directional fabric

- One (1) template 1a from fabric **A** (follow diagram 1)
- One (1) template 1b from fabric **A** (follow diagram 1)
- Seven (7) template 2a from fabric **A** (follow diagram 1)
- Eight (8) template 2b from fabric **A** (follow diagram 1)
- One (1) template 1a from fabric **D** (follow diagram 2)
- One (1) template 1b from fabric **D** (follow diagram 2)
- Five (5) template 2a from fabric **D** (follow diagram 2)
- Four (4) template 2b from fabric **D** (follow diagram 2)
- One (1) template 1a from fabric **F** (follow diagram 3)
- One (1) template 1b from fabric **F** (follow diagram 3)
- Four (4) template 2a from fabric **F** (follow diagram 3)
- Four (4) template 2b from fabric **F** (follow diagram 3)

Cutting direction for non-directional fabric

- Two (2) template 1a from fabric **B**
- Two (2) template 1b from fabric **B**
- Seven (7) template 2a from fabric **B**
- Six (6) template 2b from fabric **B**
- Seventeen (17) template 1a from fabric **C**
- Eighteen (18) template 1b from fabric **C**
- Three (3) template 2a from fabric **C**
- One (1) template 2b from fabric **C**
- Two (2) $7\frac{1}{2}$ " squares from fabric **C**
- Six (6) $14\frac{1}{2}$ " x $7\frac{1}{2}$ " rectangles from fabric **C**

- Three (3) template 2a from fabric **E**
- Three (3) template 2b from fabric **E**
- One (1) template 1a from fabric **G**
- Two (2) template 1b from fabric **G**
- Four (4) template 2a from fabric **G**
- Four (4) template 2b from fabric **G**
- Three (3) template 2a from fabric **H**
- Six (6) template 2b from fabric **H**
- One (1) template 1a from Fabric **I**
- One (1) template 1b from Fabric **I**
- Four (4) template 2a from fabric **I**
- Three (3) template 2b from fabric **I**
- Two (2) template 2a from fabric **J**
- One (1) template 2b from fabric **J**
- Nineteen (19) template 1a rom Fabric **K**
- Fifteen (15) template 1b from fabric **K**
- One (1) template 2a from fabric **K**
- One (1) template 2b from fabric **K**
- Six (6) 14½" x 7½" rectangles from fabric **K**

Use diagram 1-3 as a guide to cut your templates since they are directional fabrics.

Rotate your templates to cut your pieces according to your diagrams.

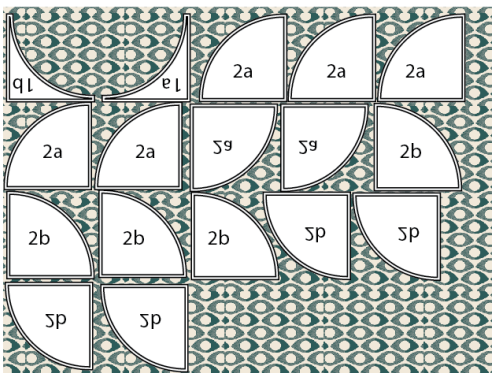


DIAGRAM 1

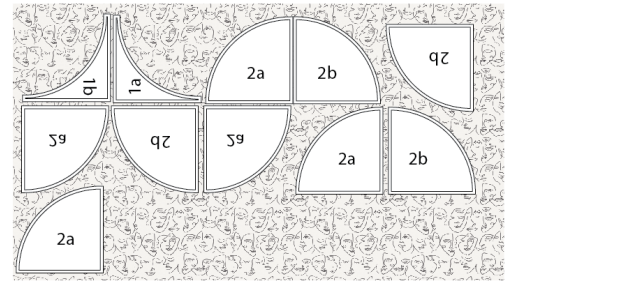


DIAGRAM 2

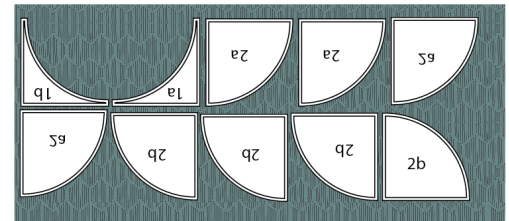


DIAGRAM 3

Use the diagram below as a guide for cutting the templates on your non-directional fabrics.

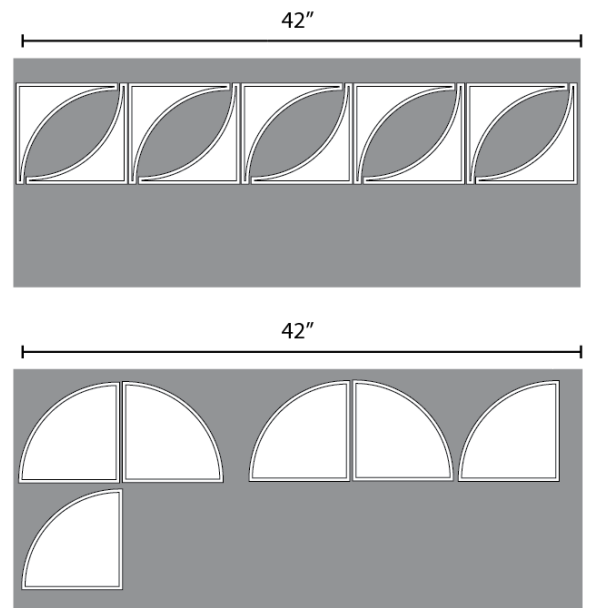


DIAGRAM 4

CONSTRUCTION

Sew all rights sides together with 1/4" seam allowance.

- Join template 1a-2b fabric pieces following the direction of the print on the diagram below.

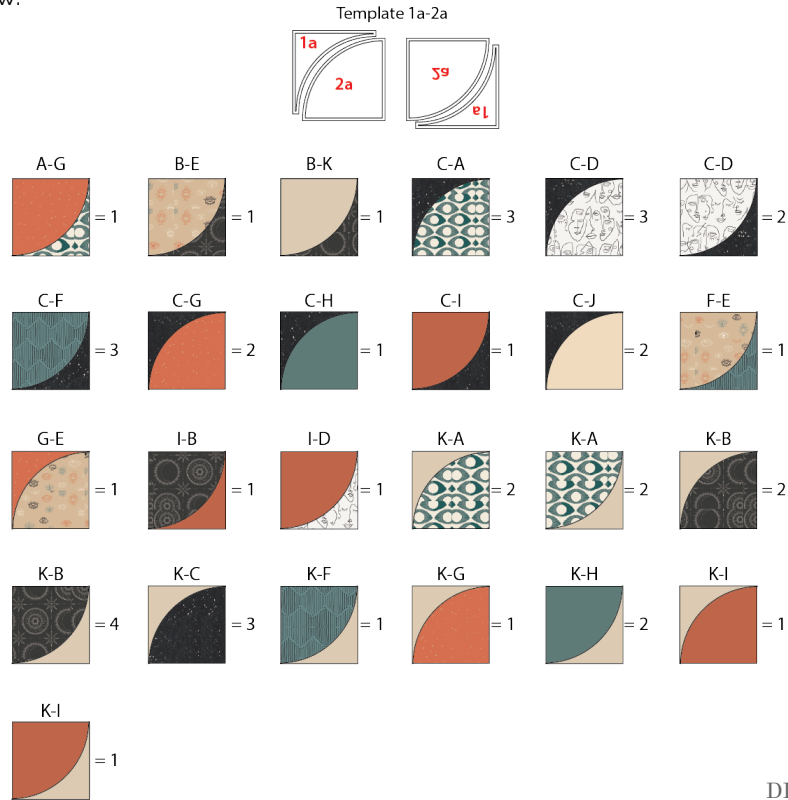


DIAGRAM 5

- Join template 1a-2b fabric pieces following the direction of the print on the diagram below.

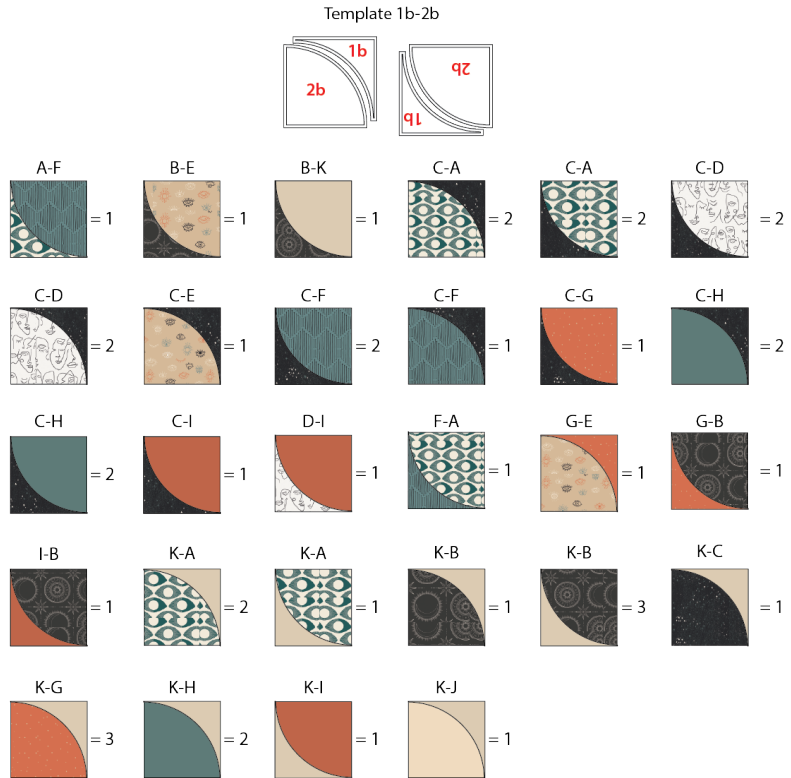


DIAGRAM 6

ASSEMBLING THE TOP

- Take your assembled pieces, (2) $7\frac{1}{2}$ " squares from fabric **C**, (6) $14\frac{1}{2}$ " x $7\frac{1}{2}$ " rectangles from fabric **C** and (6) $14\frac{1}{2}$ " x $7\frac{1}{2}$ " rectangles from fabric **K** and follow the diagram below for each row assembly.
- Then, sew rows 1-11.

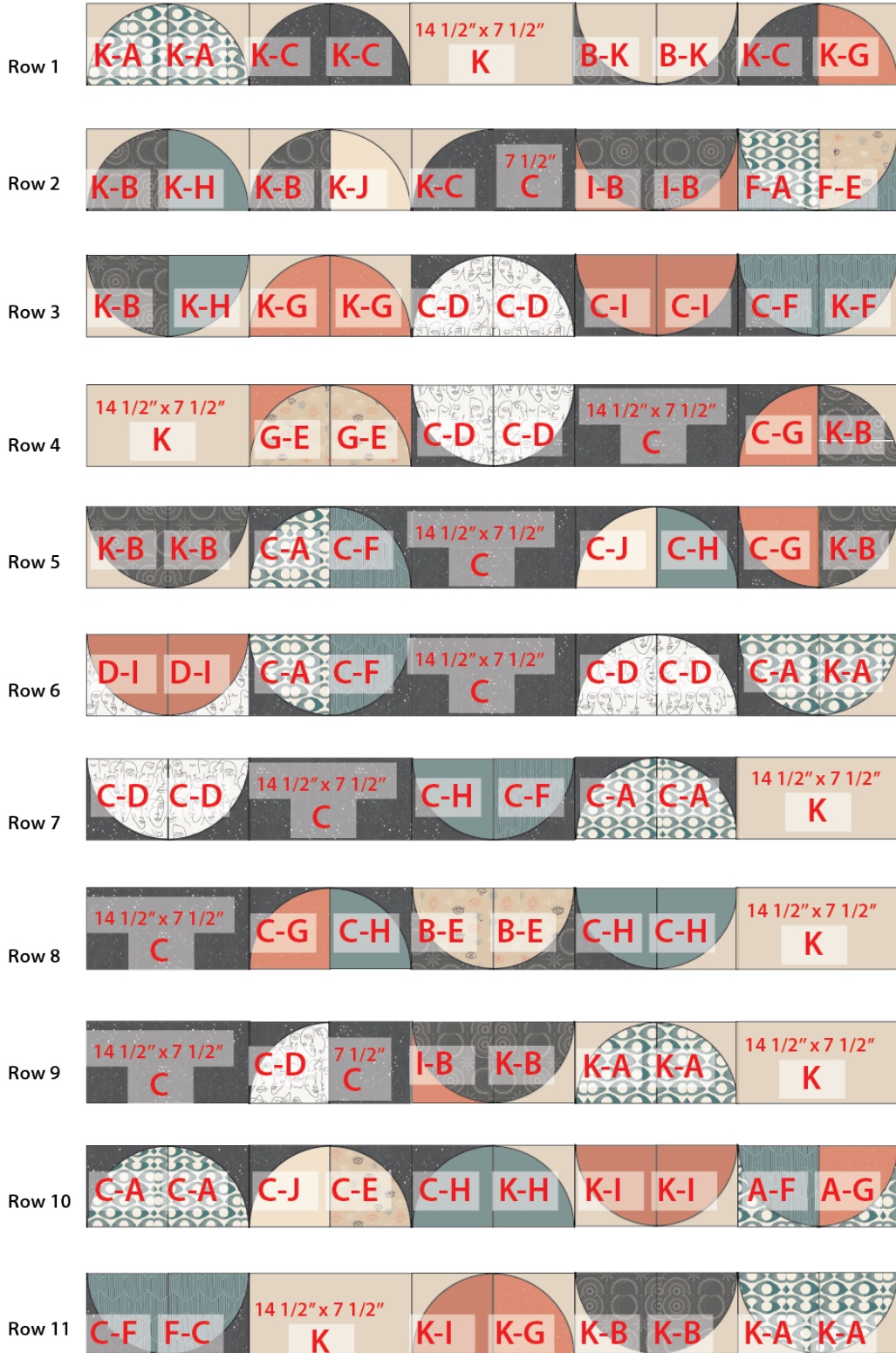


DIAGRAM 7

QUILT ASSEMBLY

Sew rights sides together.

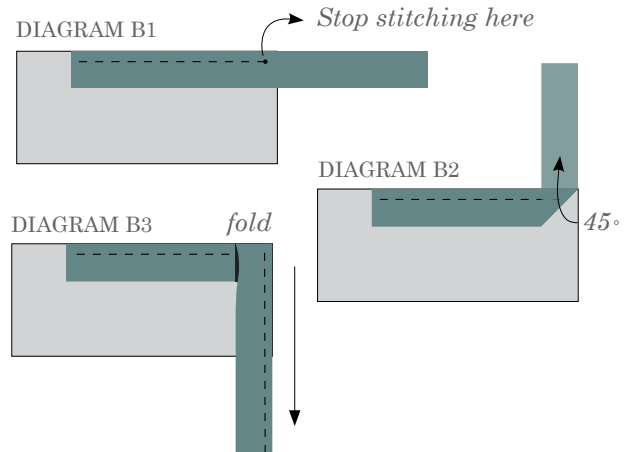
- Place BACKING FABRIC on a large surface wrong side up. Stretch it with masking tape against that surface.
- Place BATTING on top of backing fabric.
- Place TOP on top of the batting with right side facing up. Smooth away wrinkles using your hands.
- Pin all layers together and baste with basting thread, using long stitches. You can also use safety pins to join the layers.
- Machine or hand quilt starting at the center and working towards the corners. Remember that quilting motifs are a matter of personal preference. Have fun choosing yours!
- After you finished, trim excess of any fabric or batting, squaring the quilt to proceed to bind it.

BINDING

Sew rights sides together.

- Cut enough strips $1\frac{1}{2}$ " wide by the width of the fabric **F** to make a final strip 304" long. Start sewing the binding strip in the middle of one of the sides of the quilt, placing the strip right side down and leaving an approximated 5" tail. Sew with $\frac{1}{4}$ " seam allowance (using straight stitch), aligning the strip's raw edge with the quilt top's raw edge.
- Stop stitching $\frac{1}{4}$ " before the edge of the quilt (DIAGRAM B 1). Clip the threads. Remove the quilt from under the machine presser foot. Fold the strip in a motion of 45° and upward, pressing with your fingers (DIAGRAM B2). Hold this fold with your finger, bring the strip down in line with the next edge, making a horizontal fold that aligns with the top edge of the quilt (DIAGRAM B3). Start sewing at $\frac{1}{4}$ " of the border, stitching all the layers. Do the same in the four corners of the quilt.

- Stop stitching before you reach the last 5 or 6 inches. Cut the threads and remove the quilt from under the machine presser foot. Lay the loose ends of the binding flat along the quilt edge, folding the ends back on themselves where they meet. Press them together to form a crease. Using this crease as the stitching line, sew the two open ends of the binding with right sides together (you can help yourself marking with a pencil if the crease is difficult to see).
- Trim seam to $\frac{1}{4}$ " and press open. Complete the sewing. Turn binding to back of the quilt, turn raw edge inside and stitch by hand using blind stitch.



x x

Congratulations
& enjoy

x x



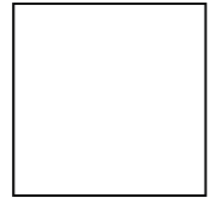
artgalleryfabrics.com

NOTE: While all possible care has been taken to ensure the accuracy of this pattern, We are not responsible for printing errors or the way in which individual work varies.

Please read instructions carefully before starting the construction of this quilt. If desired, wash and iron your fabrics before starting to cut.

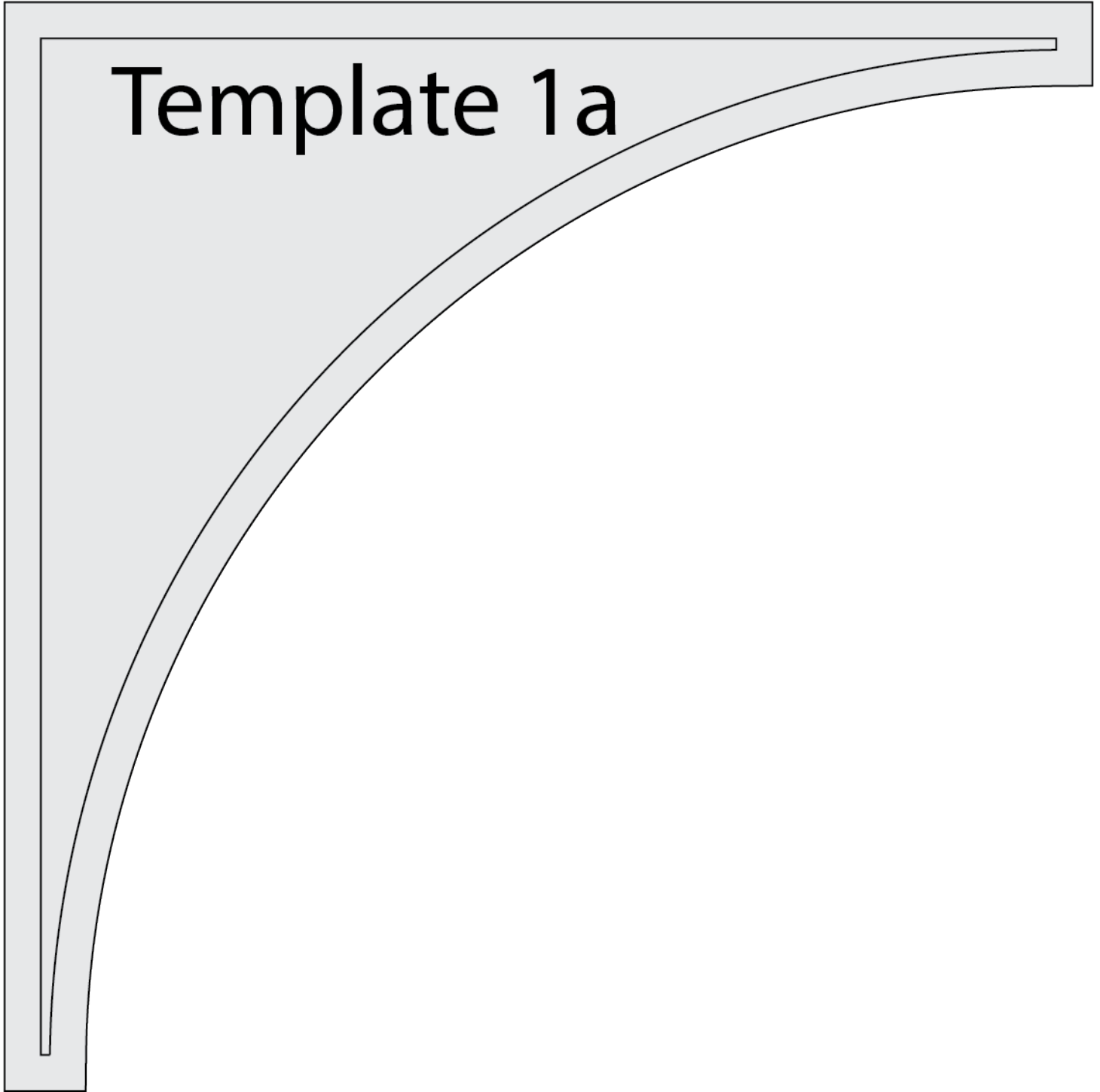
© 2020 Courtesy of Art Gallery Quilts LLC. All Rights Reserved.

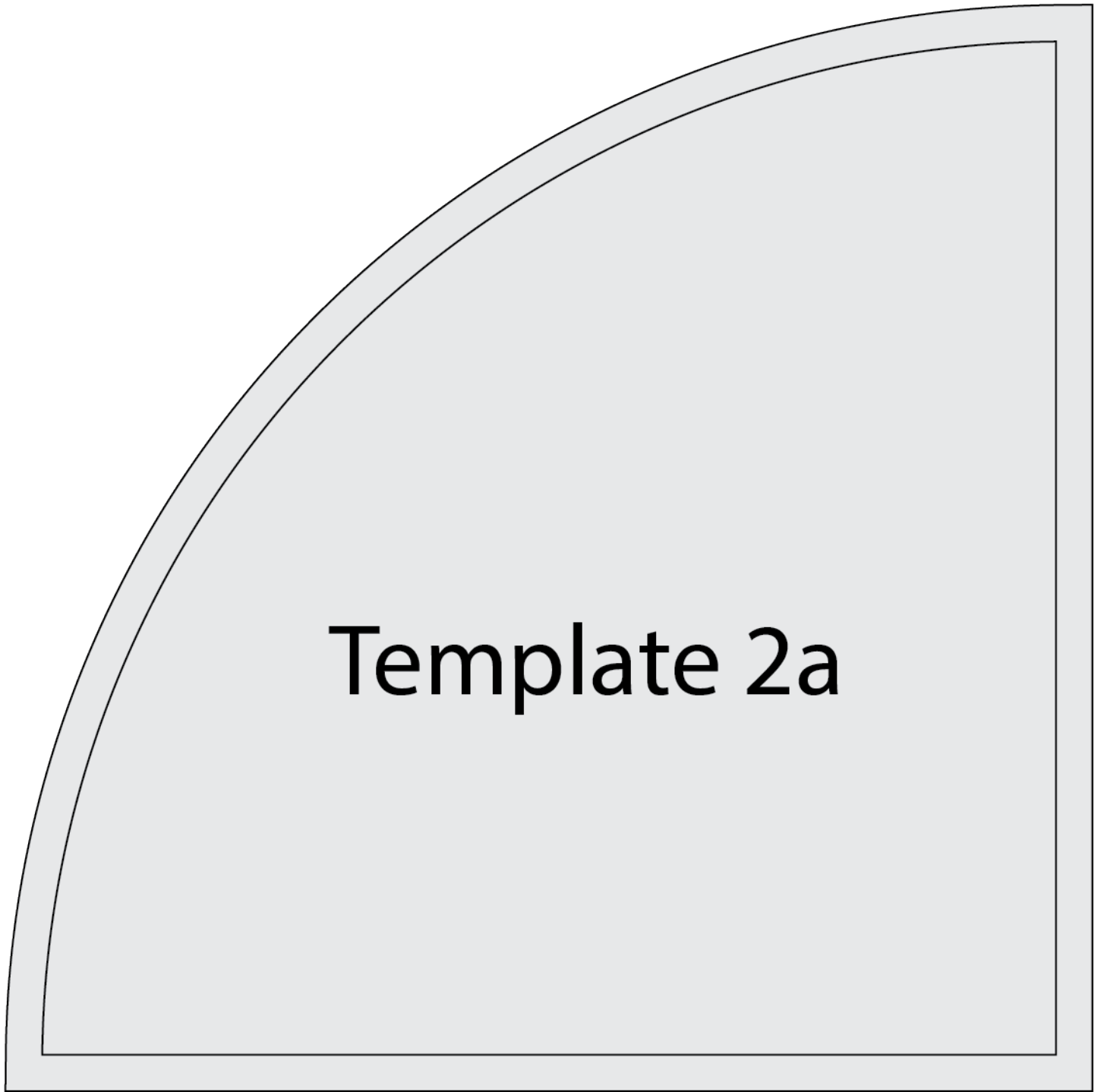
Printer Test



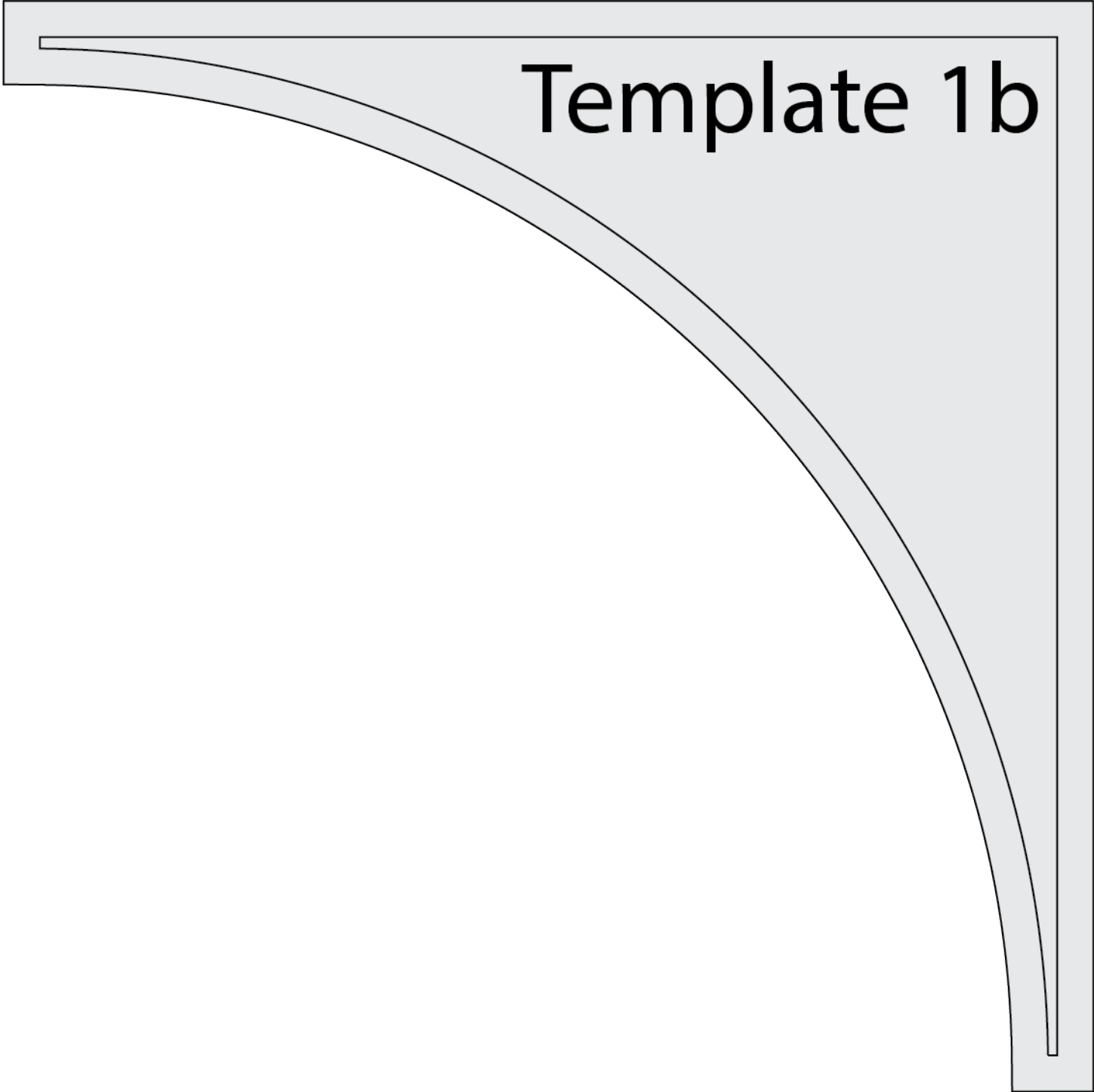
1" Square

Template 1a





Template 2a



Template 1b

Template 2b